

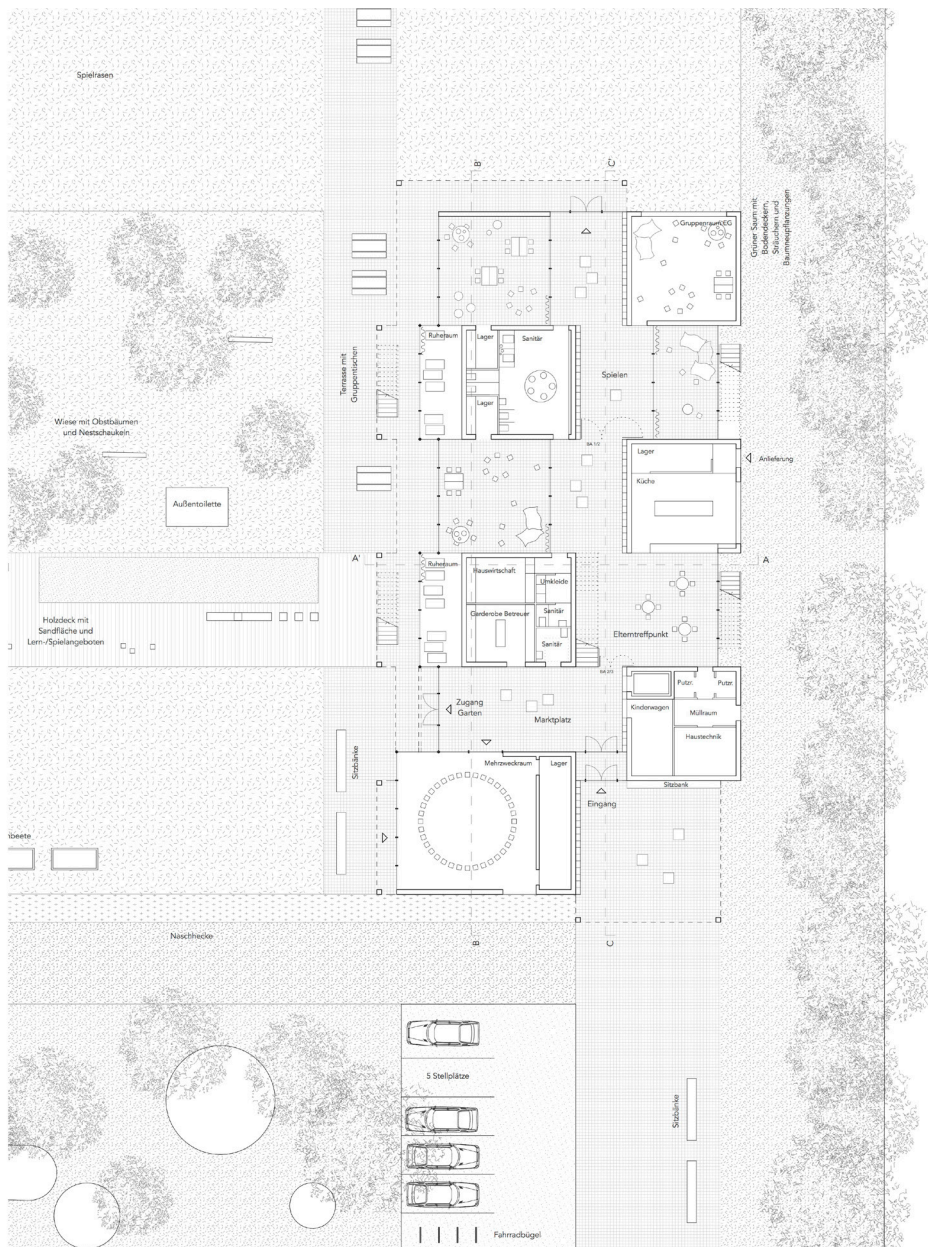




Besse Rang 1

Löser Lott Architekten, Berlin

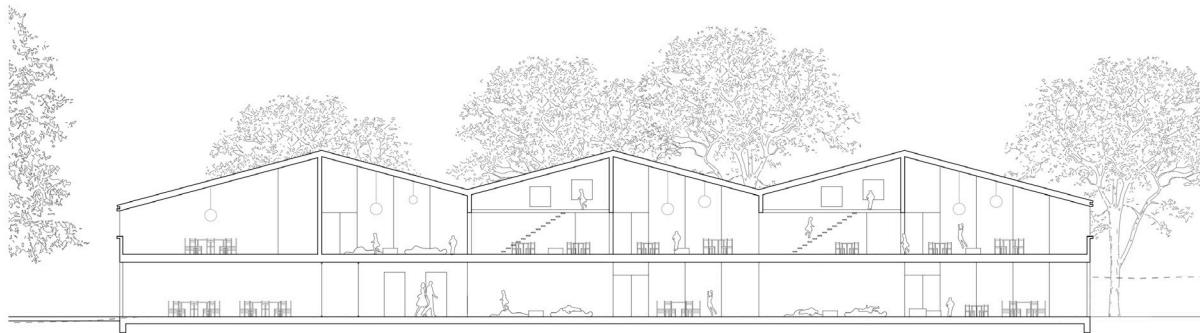
Lageplan



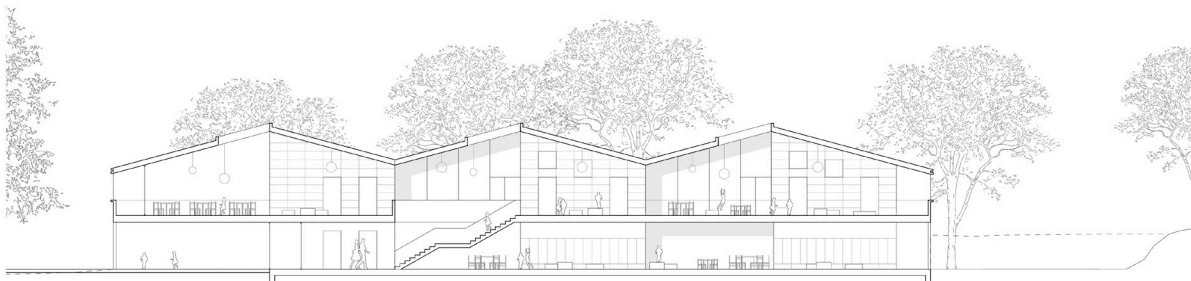




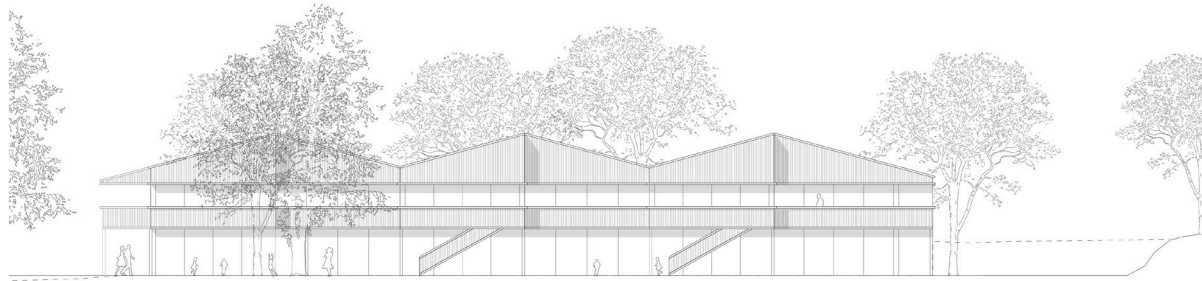
Schnitt AA' M 1:200



Schnitt BB' M 1:200



Schnitt CC' M 1:200

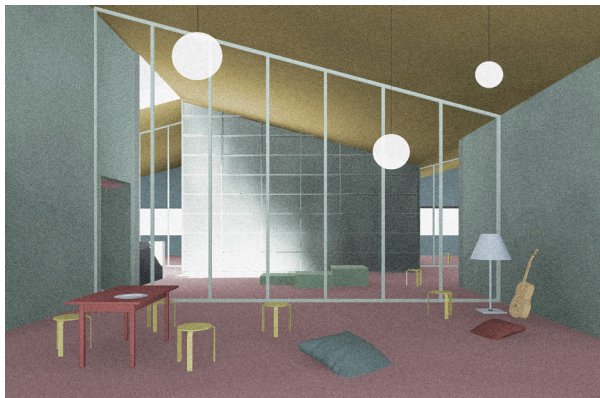
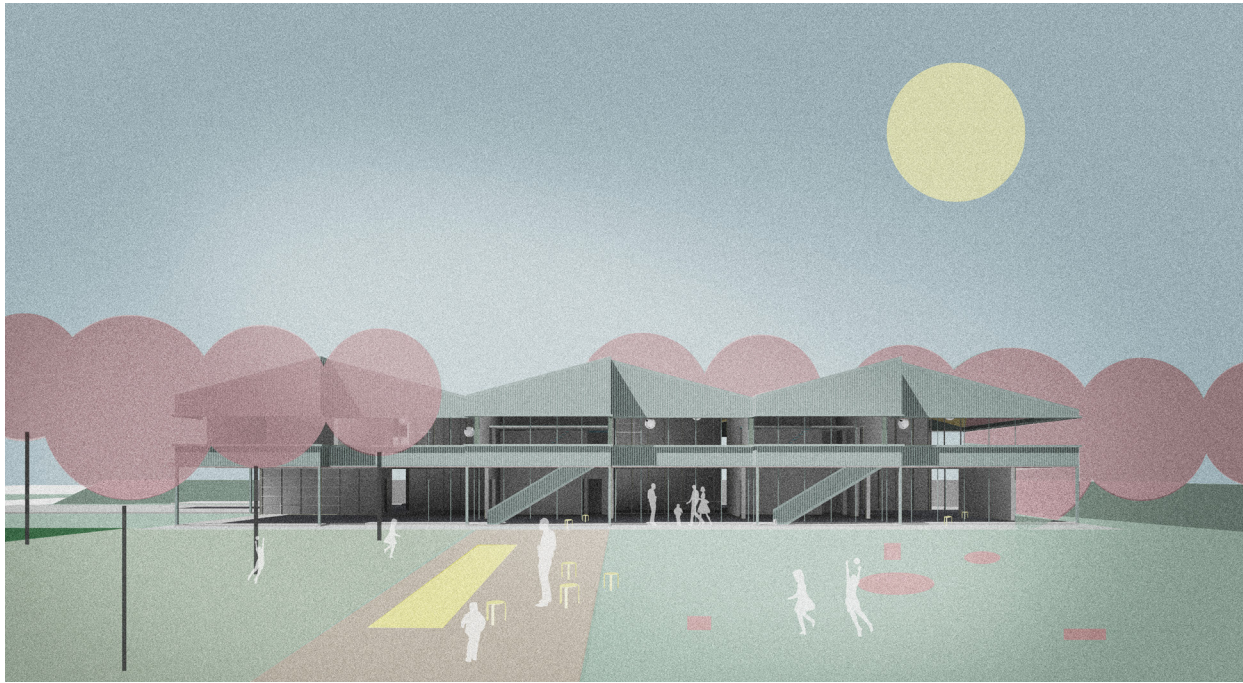


Ansicht Süd-Ost M 1:200



Ansicht Süd-West M 1:200





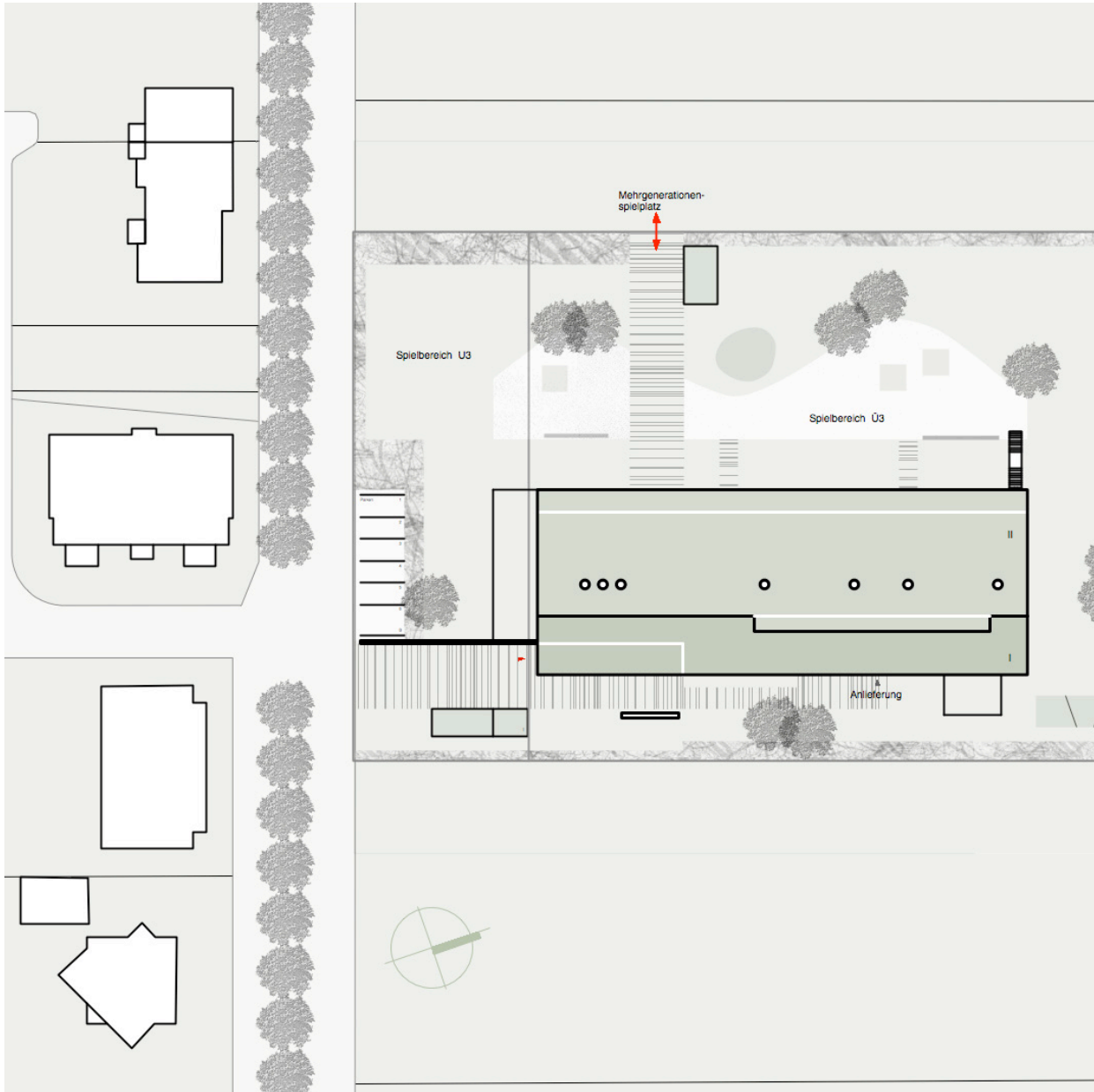
Besse Rang 1

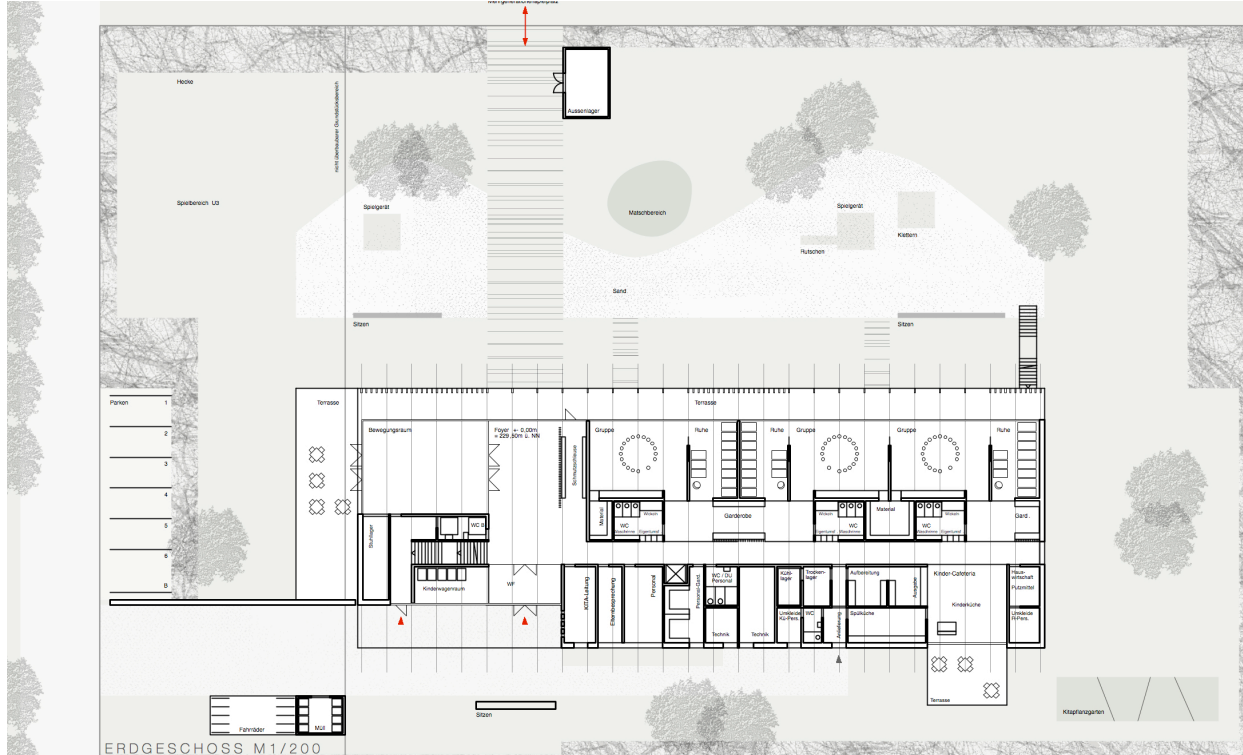
Löser Lott Architekten, Berlin

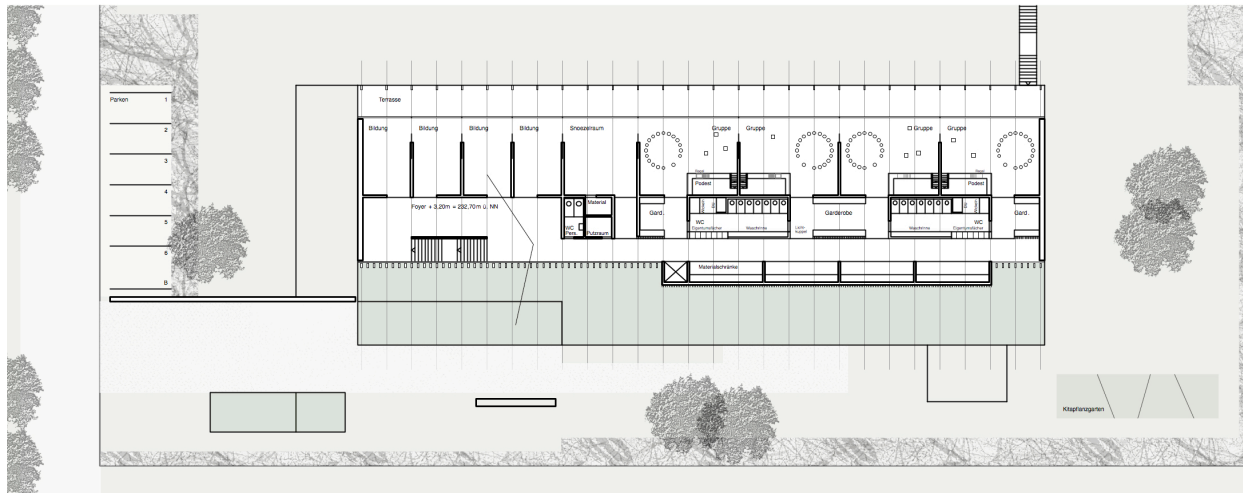
Perspektive













SCHNITT M1/200

ANSICHT SÜDWEST M1/200

ANSICHT NORDOST M1/200



ANSICHT NORDWEST M1/200



ANSICHT SÜDOST M1/200

Ansichten / Schnitte

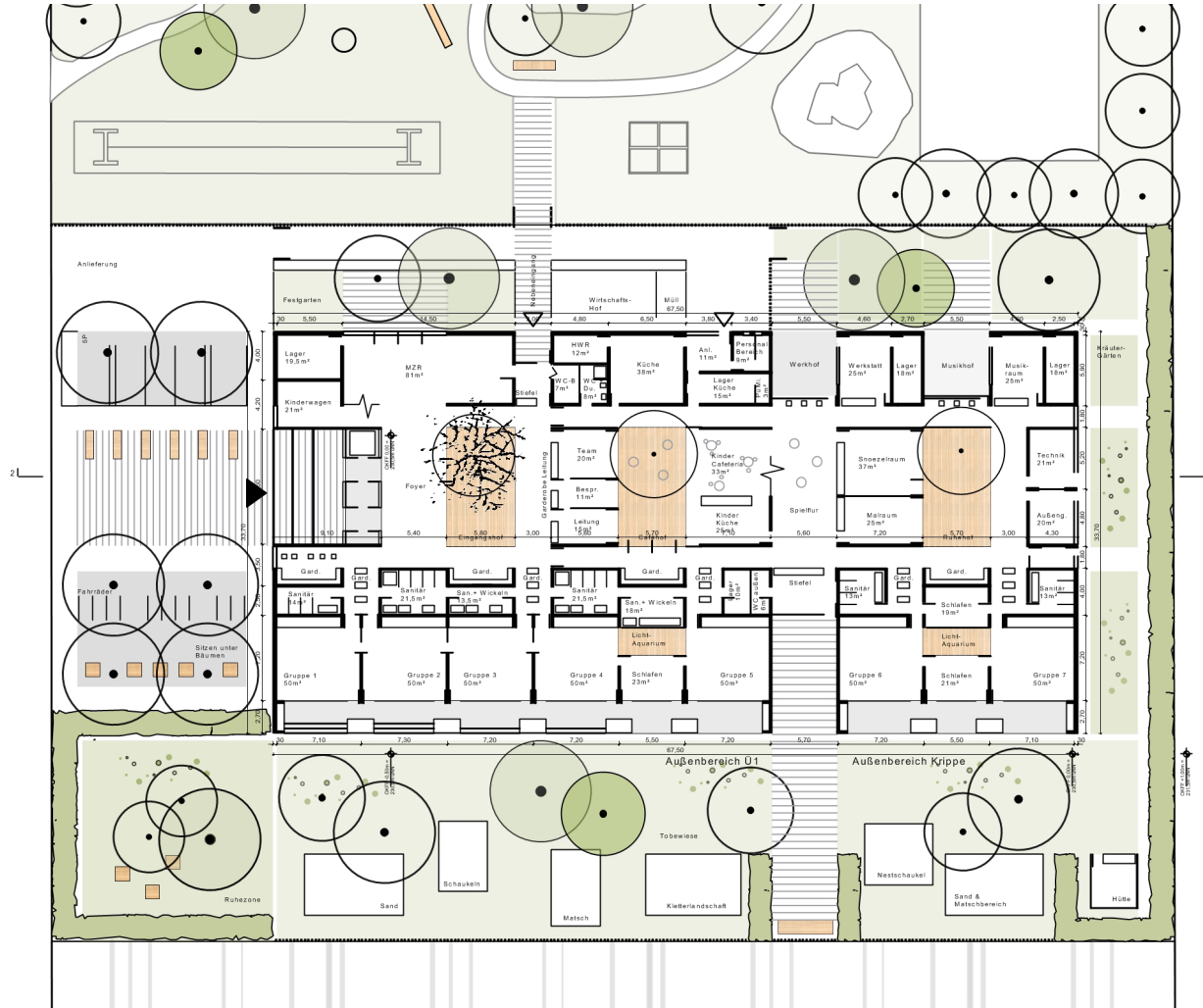


Besse Rang 2

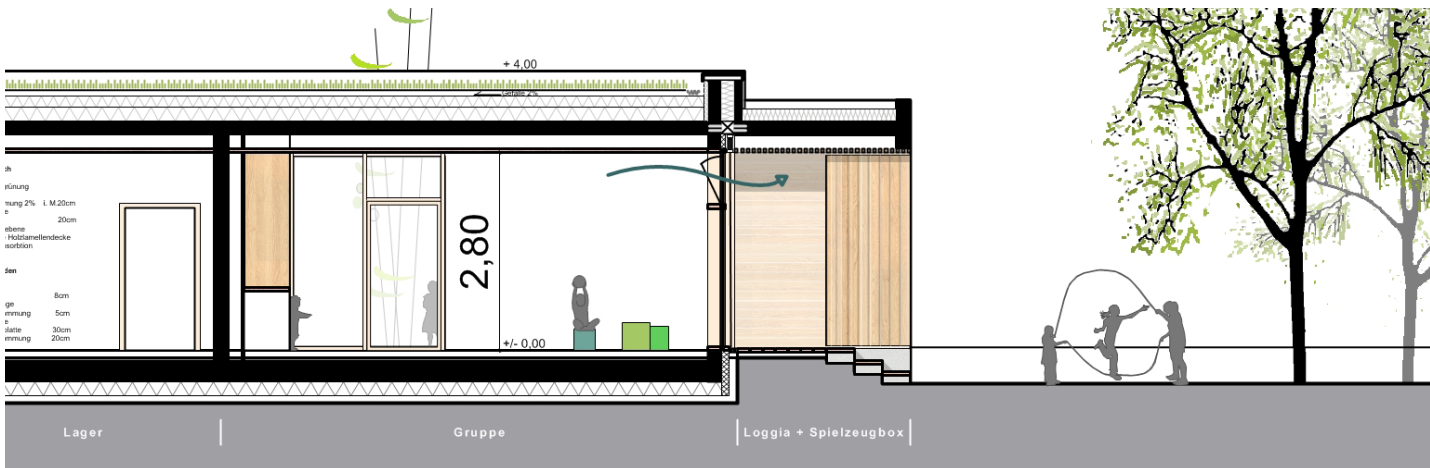
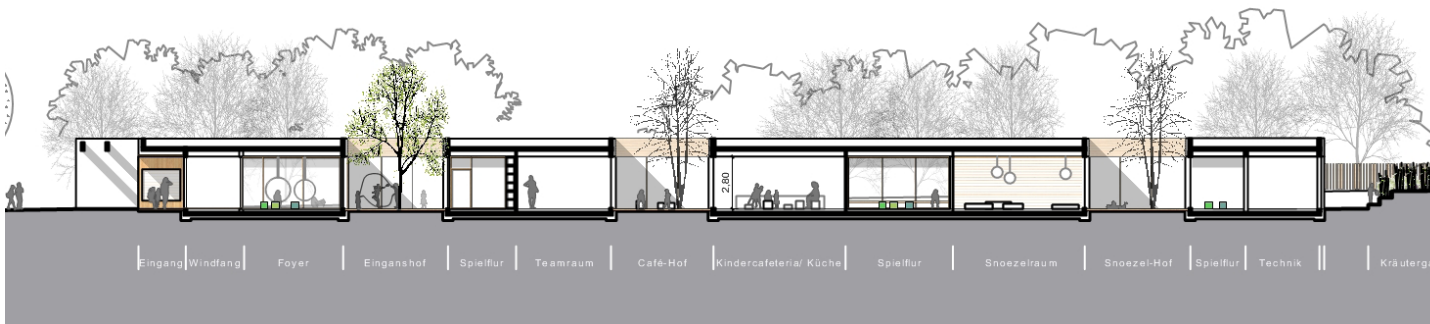
Walter Huber Architekten, Stuttgart



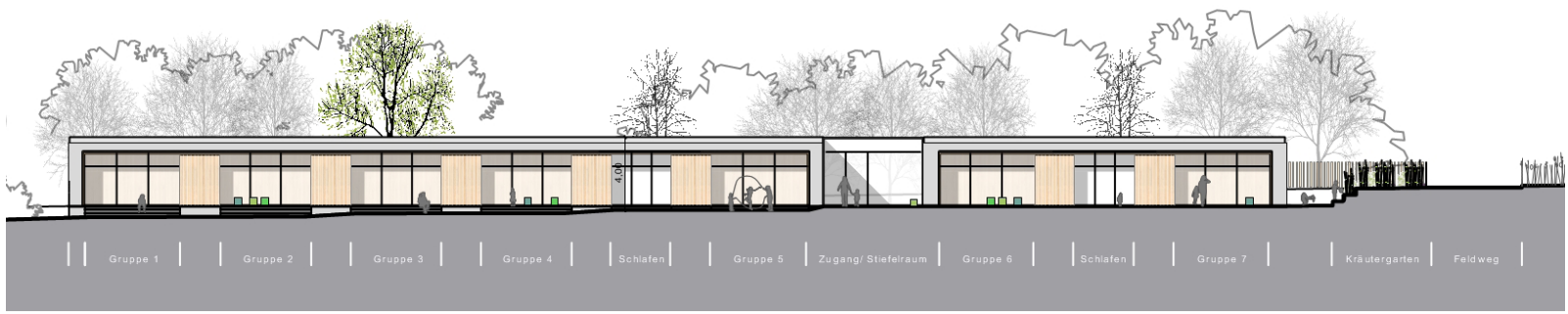




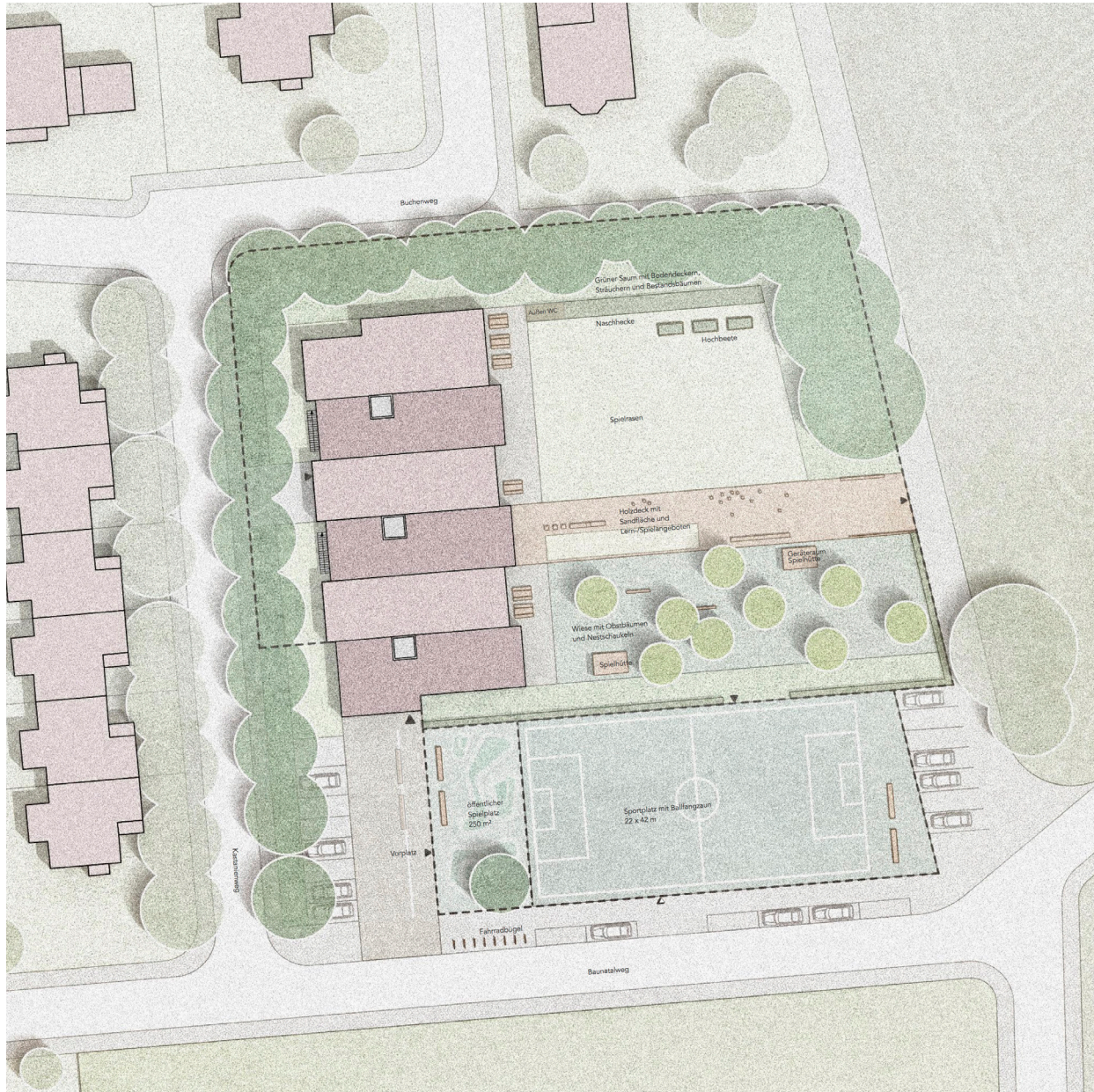




Schnitte

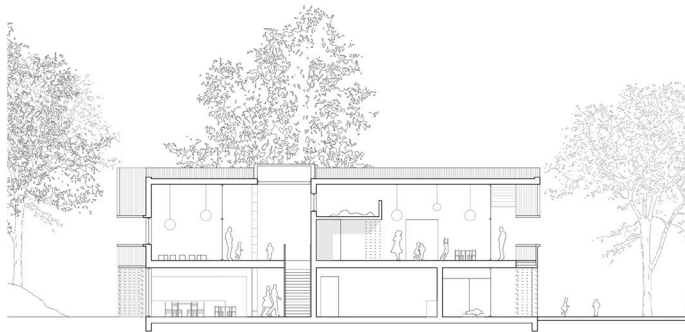




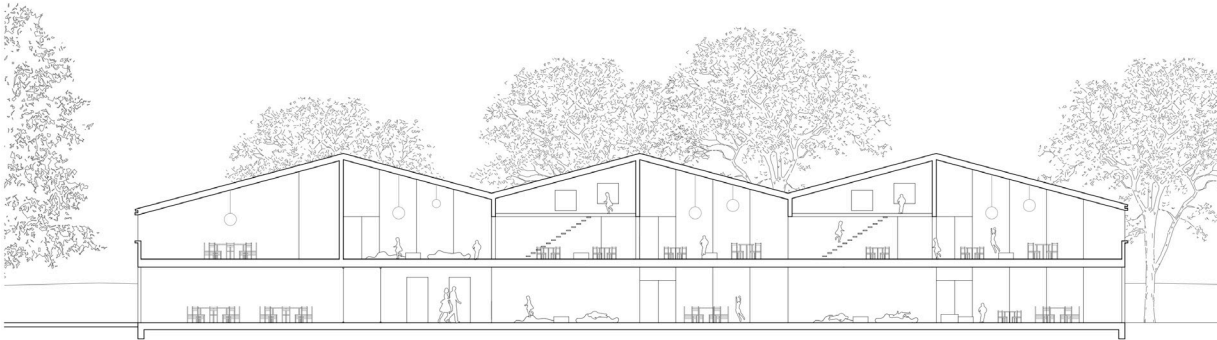




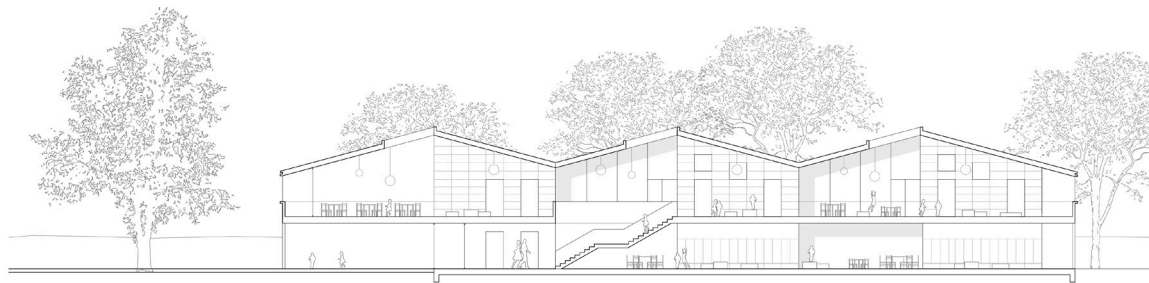




Schnitt AA' M 1:200



Schnitt BB' M 1:200



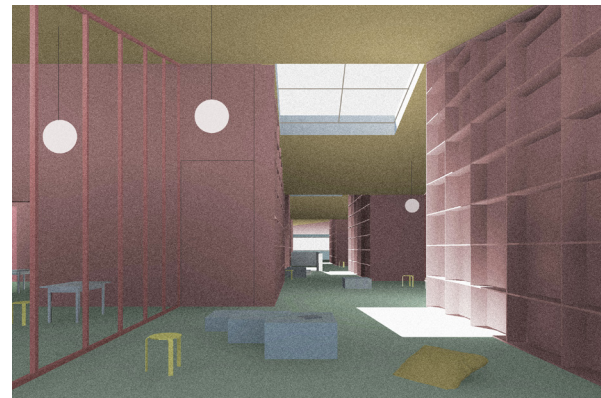
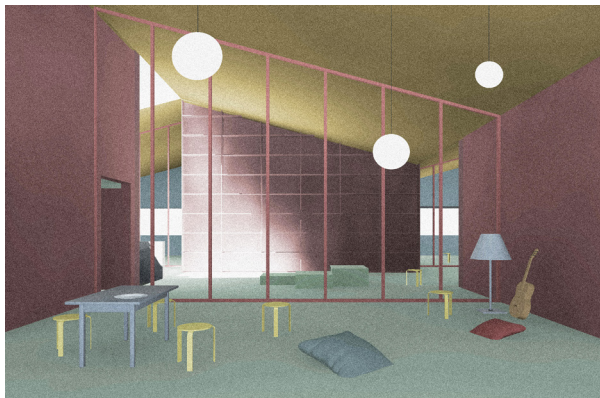
Schnitt CC' M 1:200



Ansicht Ost M 1:200





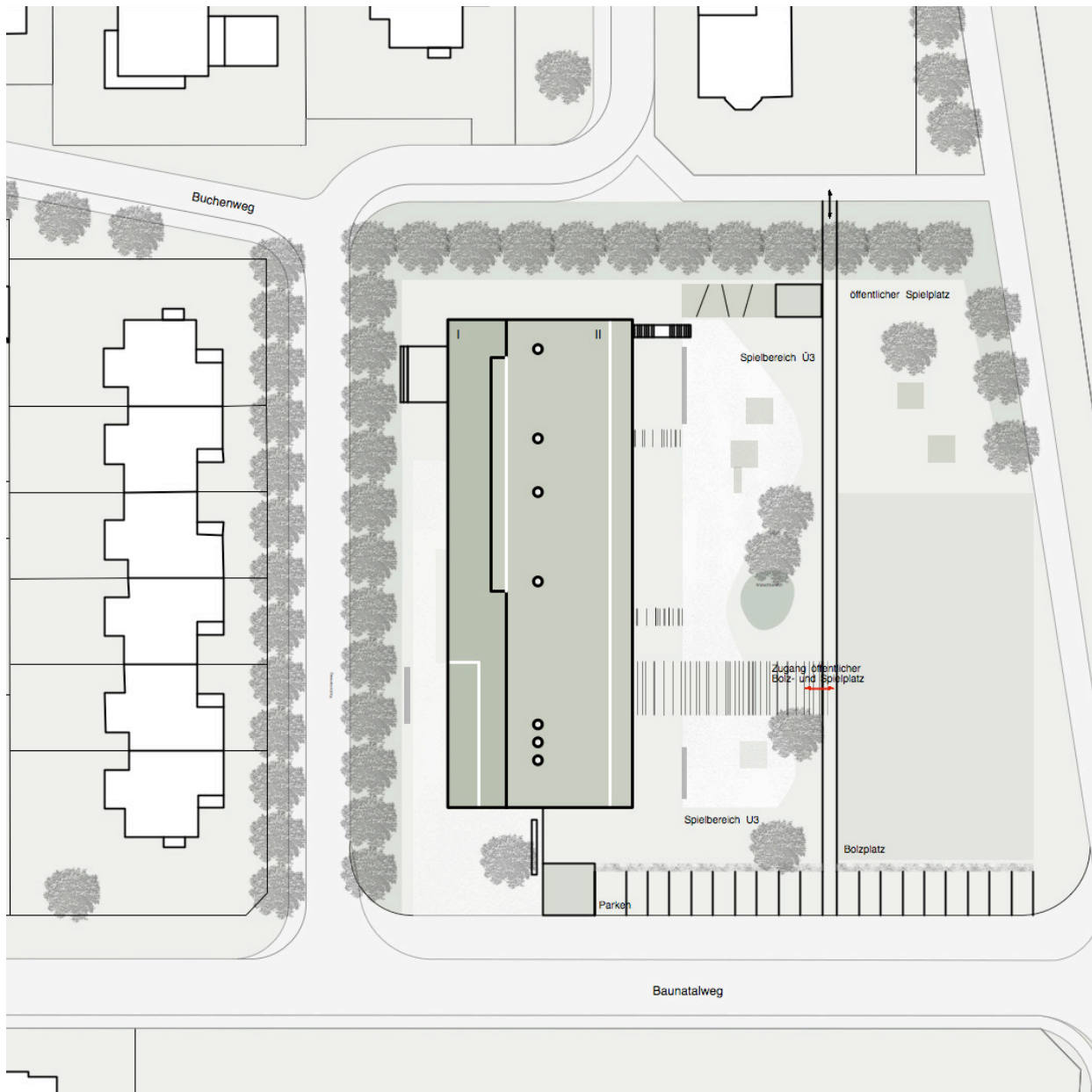


Grifte Rang 1

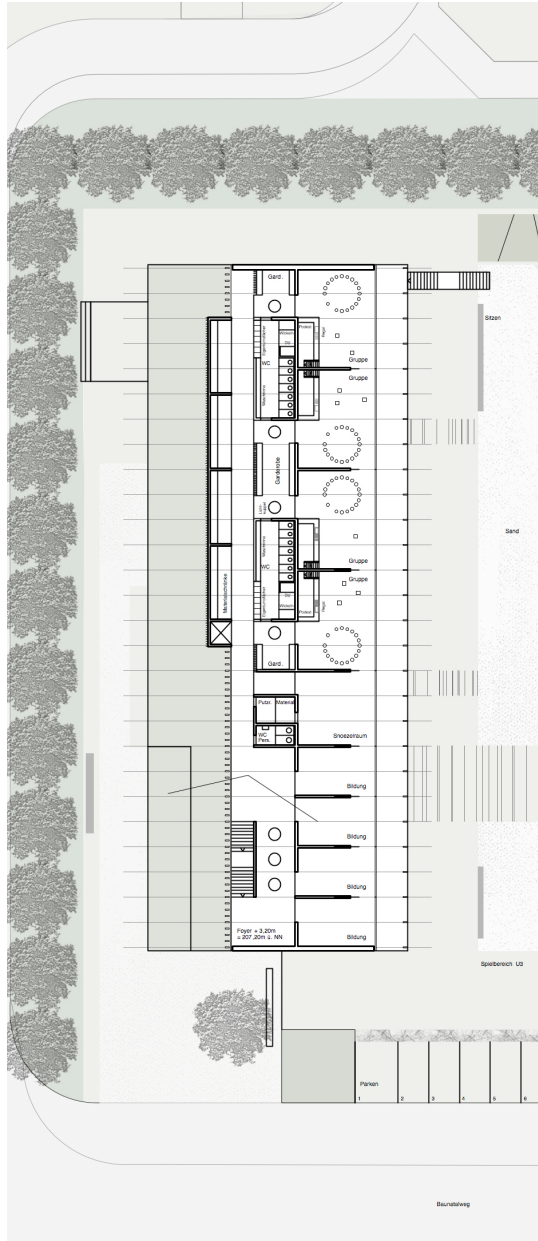
Löser Lott Architekten, Berlin

Perspektive











SCHNITT M1/200

ANSICHT SÜDWEST M1/200

ANSICHT NORDOST M1/200



ANSICHT NORDWEST M1/200



ANSICHT SÜDOST M1/200

Ansichten / Schnitte

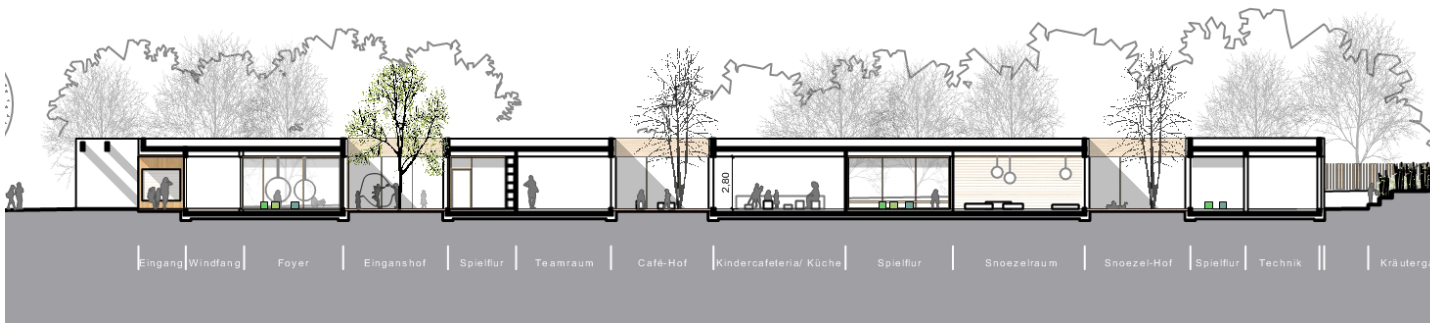












Schnitte

